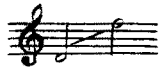


# Я ВАМ НЕ ПРАВЛЮСЬ...



Ноты с сайта - [www.notarhiv.ru](http://www.notarhiv.ru)

Слова К. Р. \*

Соч. 63. № 3

Moderato

*espress.*

**нар**

*p* *pp* *p*

*mf*

Я вам не нрав - люсь... Вы лю - би - ли лишь друж - бу - не лю -

- бовь мою; мо - и на - деж - ды вы сгу - би - ли, -

*p cresc.*

\* Стихотворение не озаглавлено.

*f*  
и все - та-ки я вас люб-лю!

*mf*

*più animato*  
[*mf*]  
Ког-да же пос-ле как-ни-будь пой-ме-те вы мо-и му-

*p*

- че- нья, и не-за-мет-но в ва-шу грудь про-

*p cresc.*

- ник - нет кап-ля со-жа-ле-нья, - то бу-дет позд-но...

*mf* *f*

Темпо I

*p*  
Рас-це-та\_ ют лишь раз ве-сен\_ ни\_е

*mf* *p* *pp*

Detailed description: This system contains the first vocal phrase. The vocal line starts with a whole rest, followed by a quarter note G4, a quarter note A4, a quarter note B4, a quarter note C5, a quarter note B4, a quarter note A4, a quarter note G4, and a quarter note F4. The piano accompaniment consists of chords in the right hand and single notes in the left hand. Dynamics include *mf* for the piano, and *p* and *pp* for the vocal line.

*ad libit.* *pp*  
це-ты; уж серд\_ ца вновь не приласка\_ют пе\_ре-страдав\_ши\_е меч\_

*mf* *p*

Detailed description: This system contains the second vocal phrase. The vocal line begins with a quarter note G4, a quarter note A4, a quarter note B4, a quarter note C5, a quarter note B4, a quarter note A4, a quarter note G4, a quarter note F4, a quarter note E4, a quarter note D4, a quarter note C4, and a quarter note B3. The piano accompaniment features chords in the right hand and single notes in the left hand. Dynamics include *mf* for the piano and *p* for the vocal line. The tempo marking *ad libit.* is present above the vocal line.

- ты.

*espress.* *pp* *p* *pp*

Detailed description: This system contains the third vocal phrase. The vocal line starts with a quarter note G4, a quarter note A4, a quarter note B4, a quarter note C5, a quarter note B4, a quarter note A4, a quarter note G4, and a quarter note F4. The piano accompaniment consists of chords in the right hand and single notes in the left hand. Dynamics include *pp* for the piano, *p* for the vocal line, and *pp* for the piano. The tempo marking *espress.* is present above the vocal line.